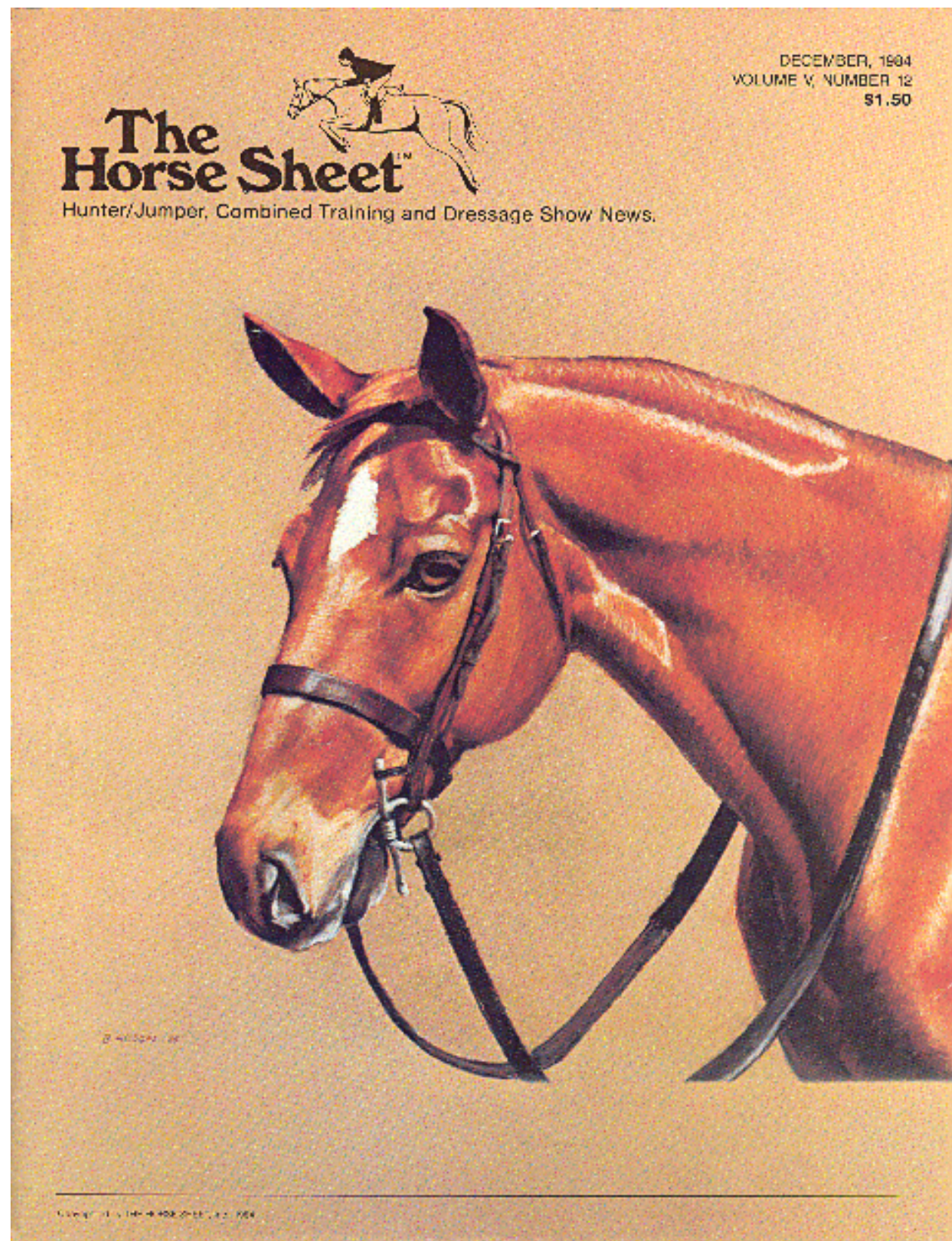
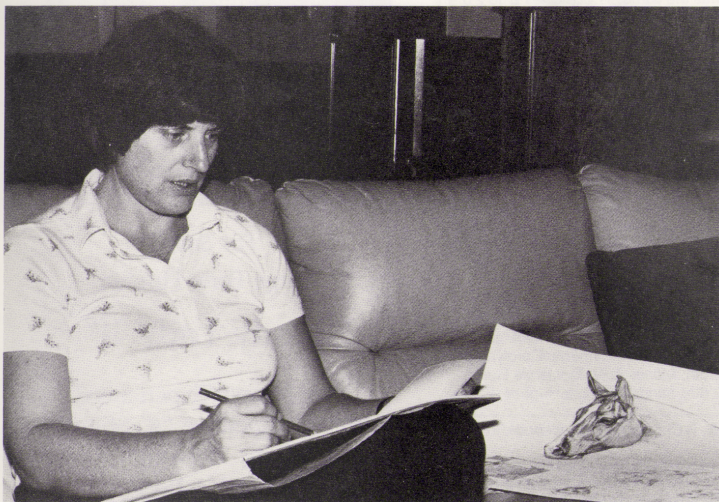


This article appeared in the December 1984 issue of "The Horse Sheet." Please zoom in to read.



Bonnie Hodges, Artist



Olva Photo Photo

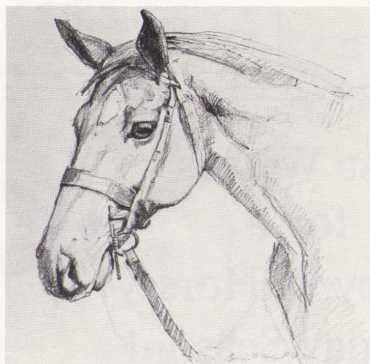
Bonnie starts with a photograph of the subject and sketches it out quickly in pencil as the first step to a portrait.

If we knew what it was about a horse that made us like them so much we could explain it. Bonnie Hodges is like the rest of us, she has always been attracted to the beauty of horses. A native of Washington, D.C. Bonnie has lived in Houston for eight years. It is only recently that she has had time from her busy family to take up her art seriously.

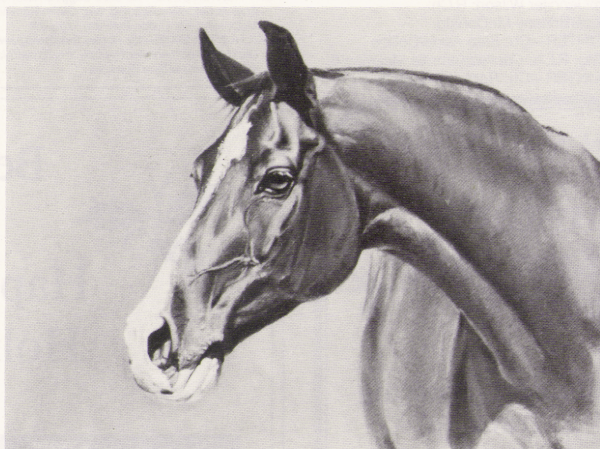
Bonnie attended the University of Maryland earning a degree in Studio Art in 1967. Later she worked as an illustrator for the Department of State. In 1969 she married Jim Hodges and were off on a honeymoon in Europe that ended in a three year stay in Wiesbaden, West Germany. While in Germany, Bonnie studied watercolors under Herr Hertzfeld, a prominent German artist.

In 1972 they returned to the States, now with their daughter Cynthia and lived in El Paso for awhile until the move to Houston in '79. As her daughter grew up Bonnie had more time to pursue her love of art. Her first love was drawing horses and other animals. She studied watercolors with Marge Brickler for awhile then started studying oils with Jose Perez. Senior Perez is a portraitist and helped develop Bonnie's potential in that area.

Bonnie has spent long hours studying the anatomy of animals and humans and know her



Preliminary pencil sketch of *Calaveras County*.



Portrait of *Ibn Abdul*, Bonnie Hodge's 3/4 Arab.

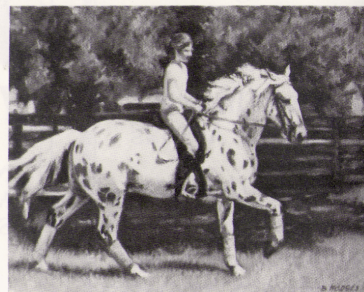
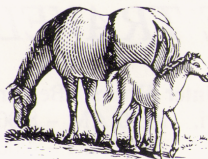


LeMaster Stables, Inc.
Hunters - Jumpers - Junior Horses
"The established show stable
in the McAllen area"

Instructions at all levels
Selection of Green-Made Horses

Pete Cody
512-383-7688

Carol Ann LeMaster
3 1/4 Mile W. Freddy Gonzalez
Edinburg, Texas 78539



Quick oil sketch of Bonnie's daughter, Cindy, and her new dressage horse *Baxter*.

subject literally from the inside out. Her horses, dogs and cats can move off the canvass; her people have real vitality. She has a knack for a slightly different approach. Often she must work from photographs but would rather work from the live subject if possible.

When doing a portrait of a horse, such as that of *Calaveras County*, first Bonnie came out and took a number of photographs. It gave her an opportunity to look at *Calaveras County* to see what the camera may distort. Then she went home and made a preliminary sketch from the photos to map out her design. The portrait was to be in pastels and very delicate and vibrant medium.

Bonnie works quickly, being able to finish a portrait in a few days. Her studio is the breakfast room adjacent to her kitchen. Here she gets plenty of light and is still in the hub of things. Paint brushes and paint pots compete with dishes and hot water kettles for space. Working more frequently in oils now, Bonnie does realistic and imaginative still lifes. One very delightful painting is a still life of favorite stuffed animals. Just the sight of it stirs memories of your favorite old pals that have long since gone to the "Goodwill." A quick oil sketch of her daughter and her new horse *Baxter* shows Bonnie's vitality and eye for movement.

Bonnie's followers are growing every day. More and more are seeking to have a Hodges on their wall. Her range of expertise runs from pencil sketches to oils to pastels to watercolors doing flowers, still lifes, and portraits of people and animals. Photographs are nice but there is nothing like a portrait in oils or pastels to bring out the true personality and vitality of the subject.

Willow Glen Schooling Show

(GHHJA) October 14, 1984, Spring, TX. Judge: Caren Castillo, Richmond, TX.

Driving rains failed to dampen the spirits of dedicated riders who trekked to Willow Glen for its October schooling show. All classes were moved inside and thanks to the cooperation of the participants who were ready at the gates, the revised schedule ran smoothly. Our congratulations to the following Division Champions:

NOVICE AND ADULT RIDER—Ch: Yvette Tisdale; R.Ch: Carolyn Nelson.

PONY—Ch: *Bilbo Baggins*/Kelly Jewell; R.Ch: *Silver Express*/Erica Files.

GREEN AS GRASS—Ch: *Patrick*/Ione French; R.Ch: *Reserve Fantastic Dancer*/Kelly Marie Young.

HOPEFUL JUMPER—Ch: *Rising Star*/Ginger Goodrich; R.Ch: *Junior High*/Kate Neal.

SCHOOLING JUMPER—Ch: *Over Easy*/Jim Breedlove; R.Ch: *Try Fudy*/Candace Chapman.

ADULT DIVISION—Ch: *Sparta Raider*/Jean Joubanc; R.Ch: *Golden Rocket Gal*/Teri Bludworth.

OPEN AND JUNIOR HUNTER—Ch: *Cade's Cover*/Teri Bludworth; R.Ch: *Cody Boat*/Shawna Neely.

PREBEGINNER AND BEGINNER—Ch: Cassie Chapman; R.Ch: Elizabeth Faulkner.

LIMIT—Ch: *Silver Express*/Erica Files; R.Ch: *Chiquito Incognito*/Trina Green.

PRE-GREEN & LOW—Ch: *Golden Rocket Gal*/Teri Bludworth; R.Ch: *Appajack*/Tracie Harrah.

Correspondent: Pat Goodrich


VOLUME V, NUMBER 12



Bonnie Hodges puts the finishing touches on a portrait of her grandmother developed from an old photograph.



A sweet still life of a collection of well-loved stuffed animals.

Oil	Pastel	Watercolor	Pencil	Pen
 ARTIST				
9626 Heathwood Dr. Houston, Texas 77040 713-466-3242				